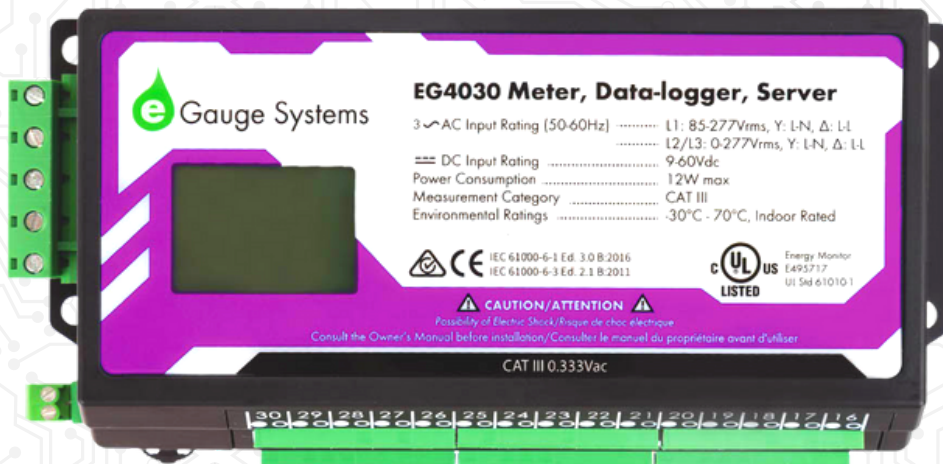


Precise. Powerful. Proficient.



3-in-1 energy meter, data logger, and web server

- No monthly subscription fees • Built in web server • Measures AC or DC power
- 15 or 30 sensor inputs (EG4015 or EG4030).
- Live interactive data
- Fully web-configurable • ANSI C12.20 (0.5%)

For commercial, residential and industrial use up to 480V
(600V with additional hardware)



Communication

Our eGauge Meters come standard with Ethernet connections, and we offer a number of other Communication options to expand your readings, from cellular routers, to Wi-Fi Access points.



Sensors

eGauge's varied options of Current Transformers (CTs) and Environmental Sensors are able to provide the perfect energy monitoring system to measure the amperage of multiple conductors.



Accessories

We aim to make the installation process of our meters as effortless as possible, from start to finish. To add more convenience and functionality to our installs, we offer a number of accessories to help, such as powered enclosures.



Sensors

- CTid Current Transformers
- 1000Vdc/700Vac Voltage Sensor
- Non-power Sensors such as 4-20mA, pulse, temperature and more



Communication

- Ethernet • Cellular • Wi-Fi
- BACnet output (Ethernet, BIP, MS/TP over RS-485)
- Modbus input/output (RS-485 or TCP)



Accessories

- Enclosure kits
- Connectors
- Mounting hardware & more



CTid is a technology created by eGauge Systems which makes it possible for CTs and other sensors to transmit information about themselves to the meter, allowing the meter to automatically detect and configure CT scales and other sensors connected to any of the meter's 15 or 30 sensor ports.

CTid-enabled sensors also have an embedded LED that can be remotely activated to show the physical location of a given CT or sensor.

