



Tutorial 7: Connecting via the eGauge proxy using IE 10/11

Article ESA-1007T

December 4, 2013

Contents

7.1 What's the problem?	2
7.2 Steps to resolve	3

7.1 What's the problem?

Internet Explorer enables a functionality referred to as "Protected Mode", which has been included for several versions of IE, by default for the Internet "Zone". In IE 10/11 on Windows 8 and Windows 8.1 respectively, this feature seems to have an un-documented issue with passing login credentials to particular sites. This problem can manifest itself as constantly being re-prompted for login credentials. This issue can be resolved by disabling "Protected Mode", but it is better to follow the steps below to allow your eGauge proxy connection to be accessed properly without disabling "Protected Mode".

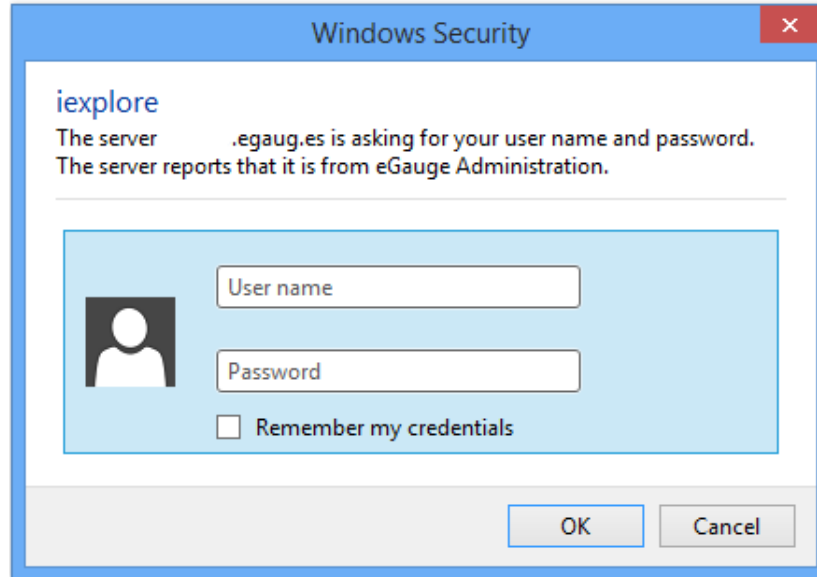


Figure 7.1: Login prompt for IE 11

7.2 Steps to resolve

1. Open the **Internet Options** menu.

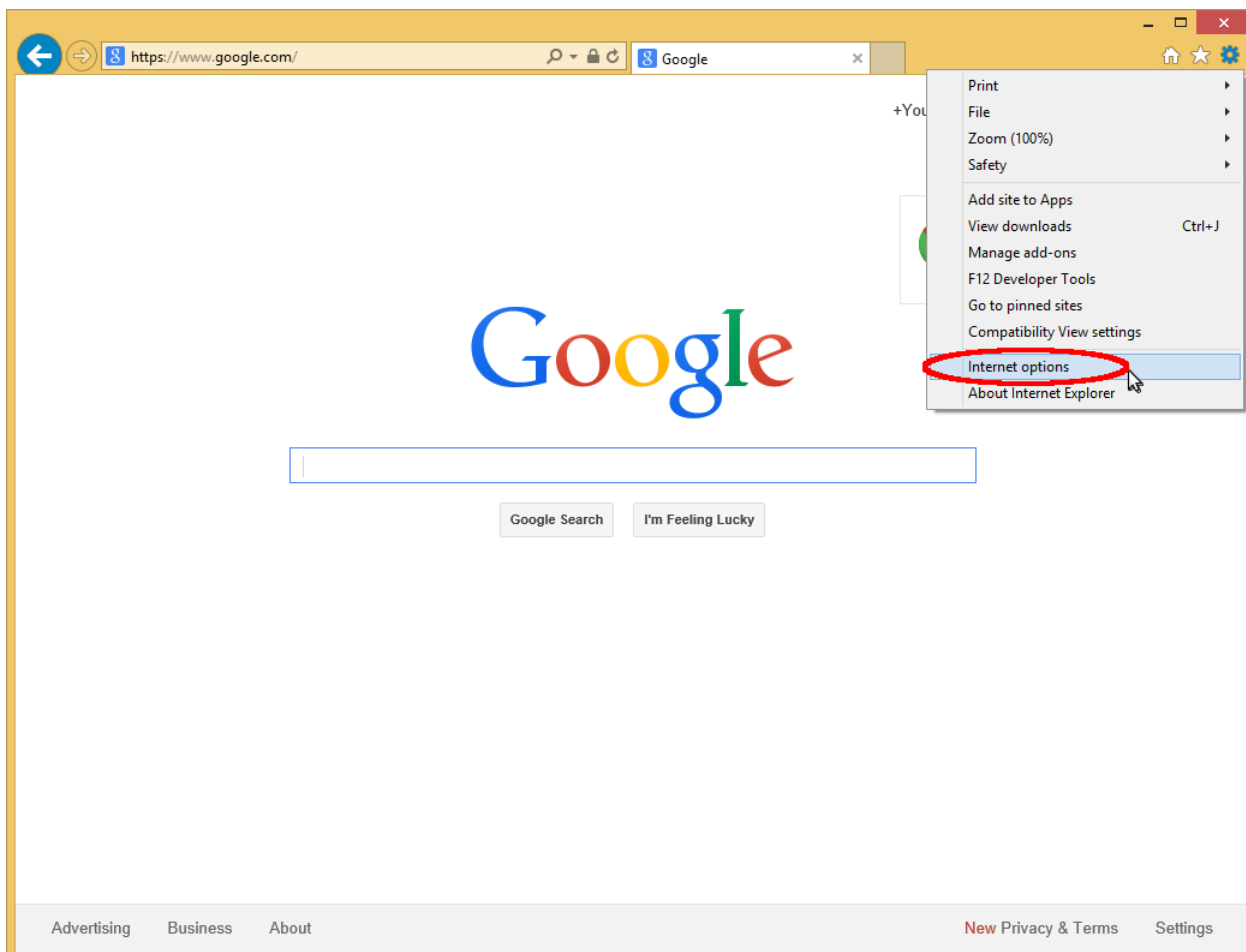


Figure 7.2: Where to click for *Internet Options* menu

2. Select the **Security** tab.

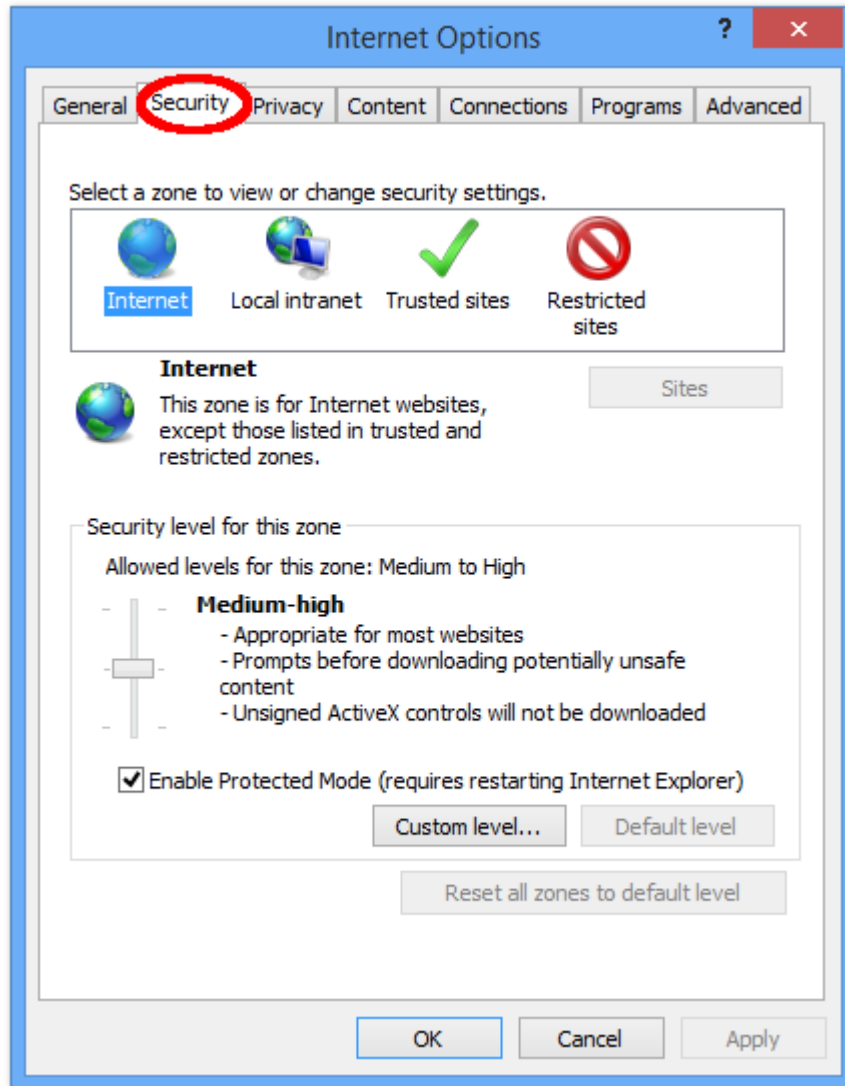


Figure 7.3: Security tab

3. Select **Trusted Sites** and click the **Sites** button.

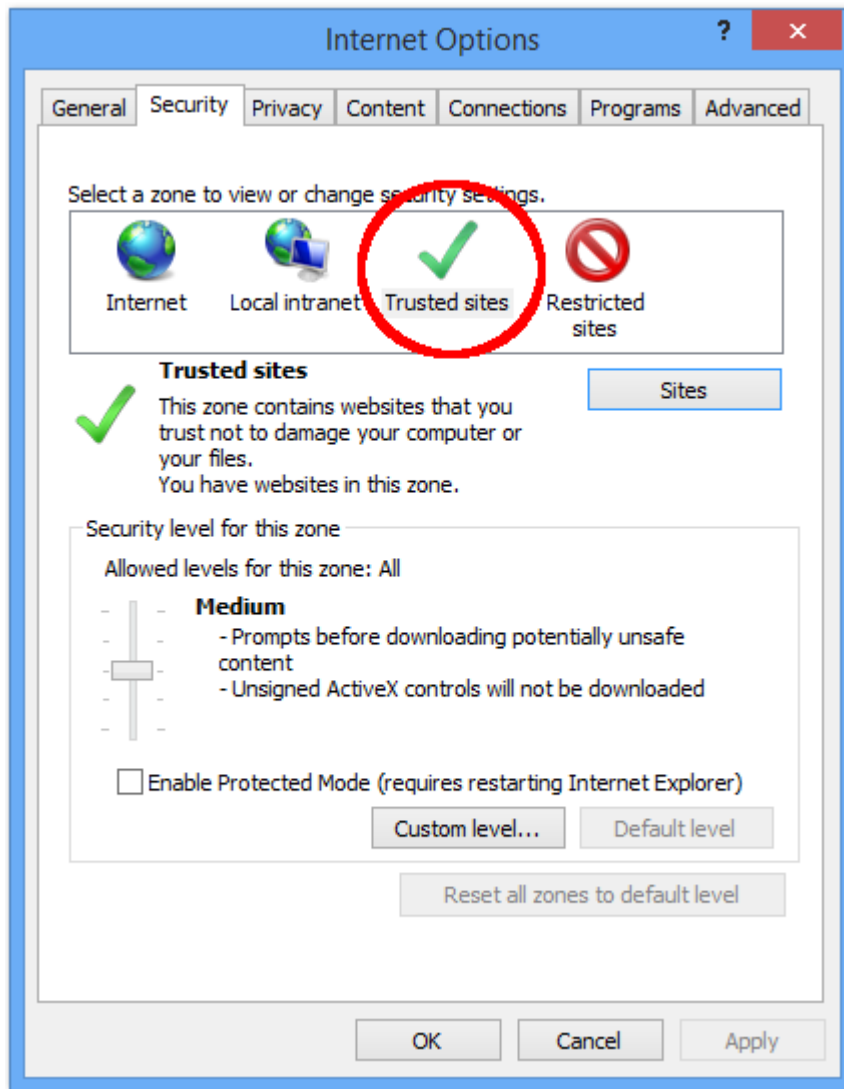


Figure 7.4: *Trusted Sites zone*

4. Make sure **Require server verification (https:) for all sites in this zone** is *not* checked.

Enter the URL for your eGauge where it says **Add this website to the zone** in the format

<http://DEVNAME.egaug.es>

where *DEVNAME* is the name of your device (e.g. eGaugeXXXX where XXXX are 4 digits). Click the **Add** button.

Click **Close**.

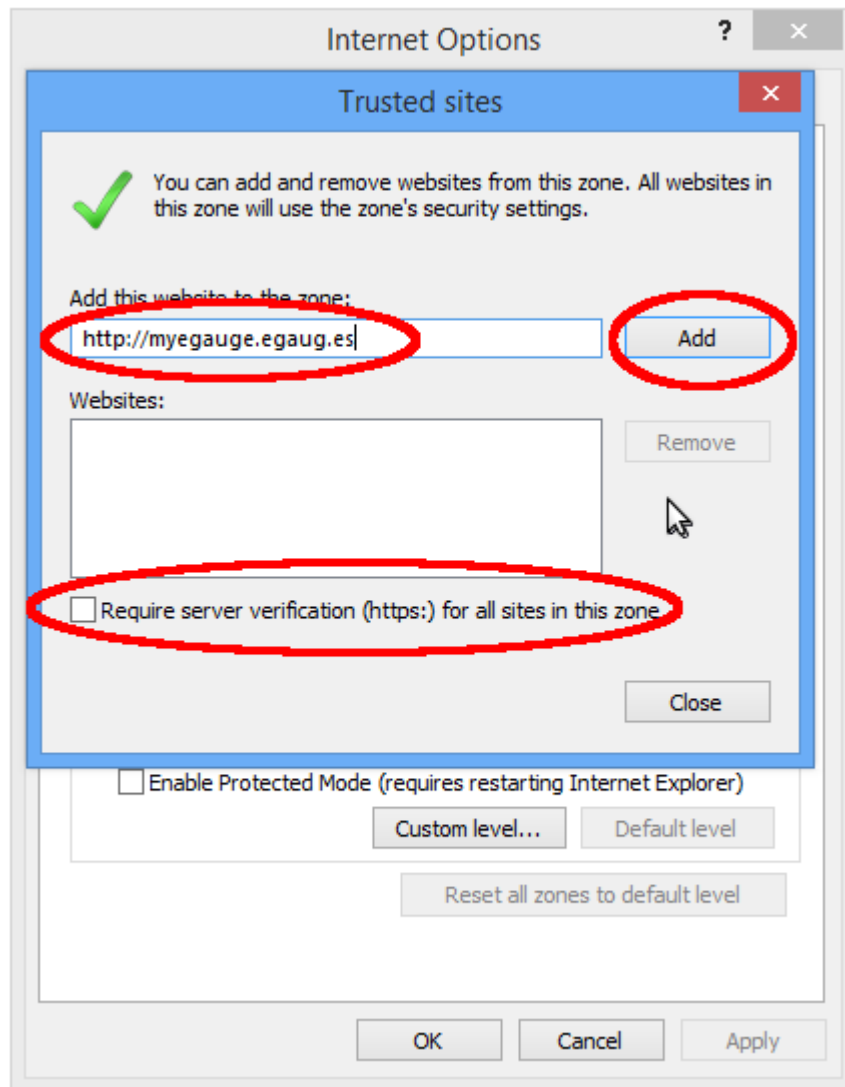


Figure 7.5: Trusted Sites add site

5. Click **Close** to exit the **Trusted Sites** window, then click **OK** to exit **Internet Options**.

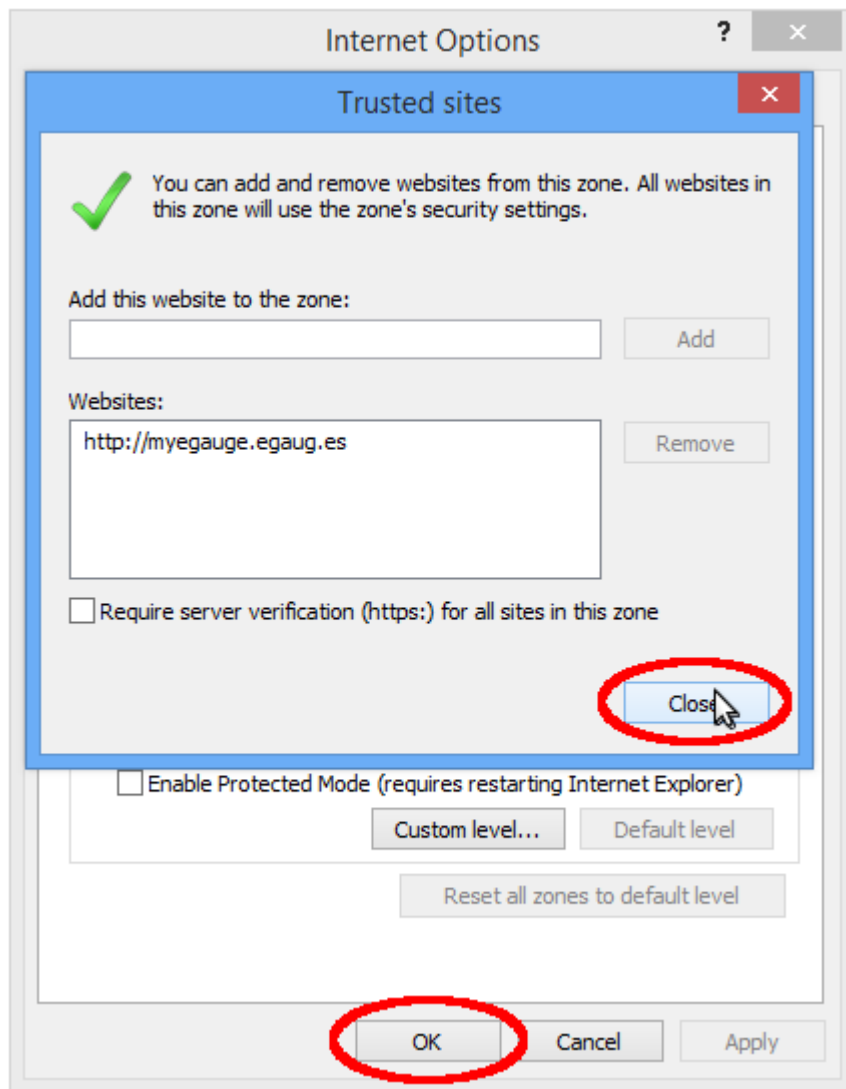


Figure 7.6: *Trusted Sites close page*

You should now be able to login to your eGauge device via the proxy without issue.