



Revenue-grade Split-core Current Transformer JSXXSL-XXX-333mV series

ISOLATED OPEN CT

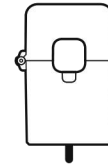


UL E344623 CE

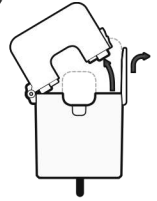


How to use >>>>

1



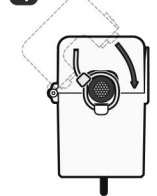
2



3



4



JS series of split-core current transformer offers 333mV at secondary from sensed primary current. Without using secondary CT inside of meter, users directly connect JS series to a meter for high accuracy metering application. It enables one meter to be adopted for various current rating by only changing primary CT so it makes compact design meter and reduces developing cost. Also, over-voltage protection circuit is included to offer safe, fast and cost effective installation.

>>>> Applications

- Power meter
- Switchgear
- Distributed measurement systems
- General Sets
- Control panels

>>>> Benefits

- Small-size, light-weight
- Simple Installation
- Over-Voltage protection circuit is installed.

>>>> Features

- PC spring, output-terminal, secure locking hinge, one-touch structure make easy to install to the existent equipments such as a power distribution boards.
- Isolated plastic case recognized according to UL94-V0
- UL / EN 61010 - 1 certified

>>>> Notice

- Core contact surface is waterproofed, however if it gets rusty, you could reuse after removing rusts with spraying WD-40 or CRC5-56 on the rusted side
- Customizing output lead wire

>>>> Specification

Accuracy	Class 1.0
Output Terminals	2 X M3-Screw, with Terminals cover
System Voltage	720V(0.72kV)
Overload withstand	1.2 times rated current continuously
Compliant with	IEC/EN60044-1 & IEC61010-1
Operating Temperature Range	-20°C to 55°C
Relative Humidity	0-85% non-condensing
Test Voltage	3kV for 1minute
Frequency Range	50/60Hz
Protection Level	3.0V0-P
Insulation Category	CAT II or CAT III 600VAC



How to Order / Model Reference

eg **J S 3 6 S L** **0 0 0** **3 3 3 mV**

Model **J S 3 6 S L**

Primary Current
Select code from ratio table

Secondary Voltage
333mV **3 3 3 mV**

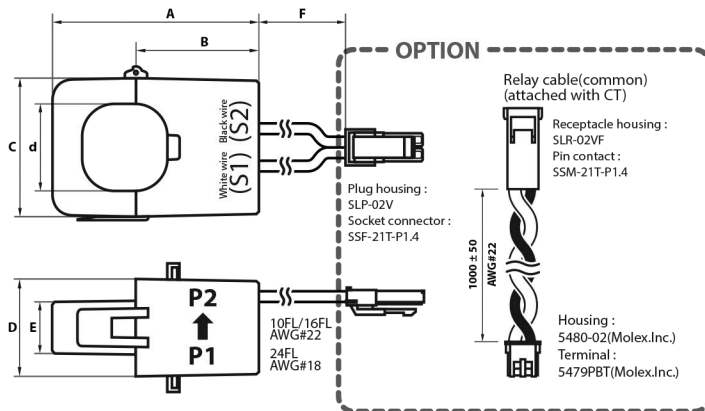
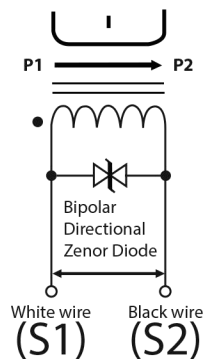
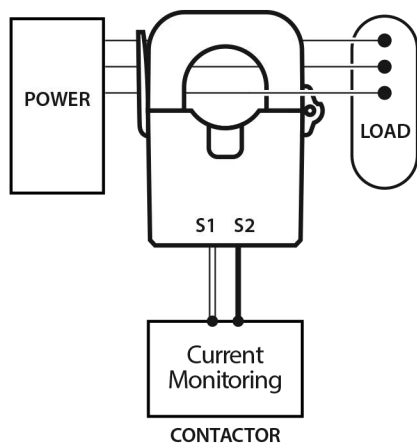
Current Transformer Ratios

Primary Current (A)	Metering Burden(VA)			Code
	cl. 0.2S	cl. 0.5S	cl. 1	
400			0.05	400
600			0.05	600

333mV Secondary

Accuracy conforms to IEC61869-2 & IEEE/ANSI C57.13
meets the measuring range from 1 to 120 % of I_n

>>>> Applications / Dimensions



Unit : mm

Model	A	B	C	D	E	F	Ød
JS36SL	82.4	48	57.1	40.2	21.1	200±20	36